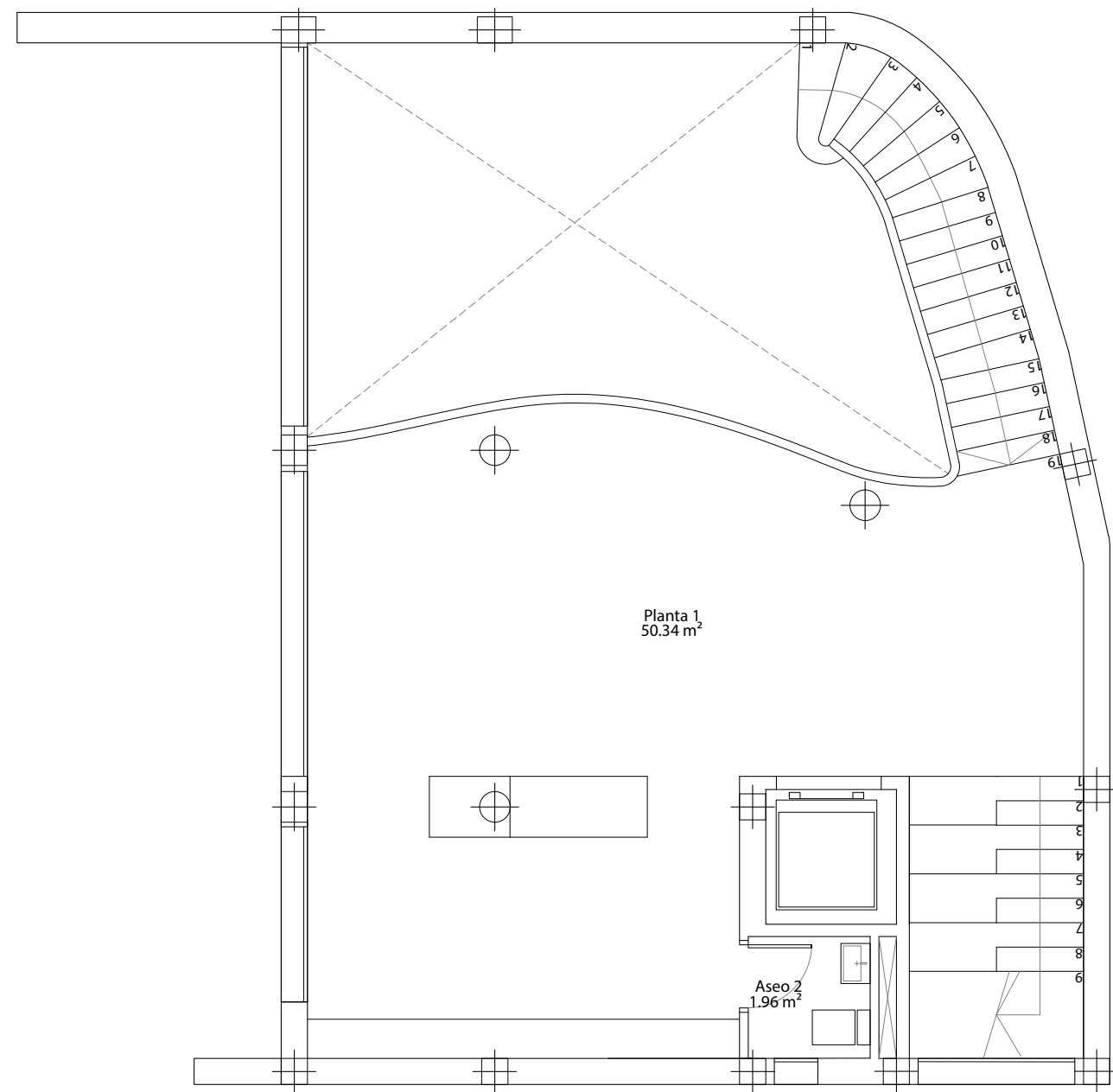


-1

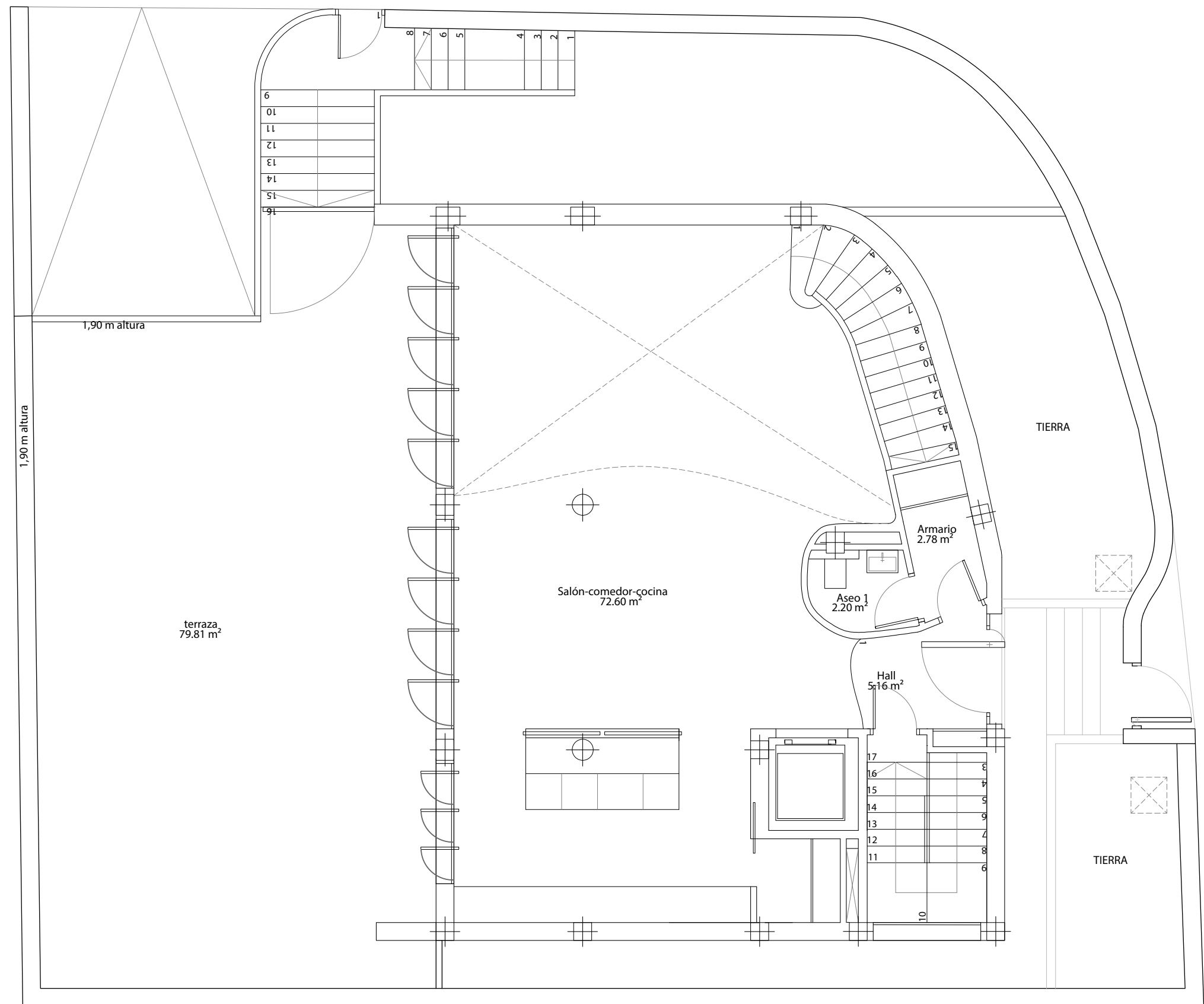


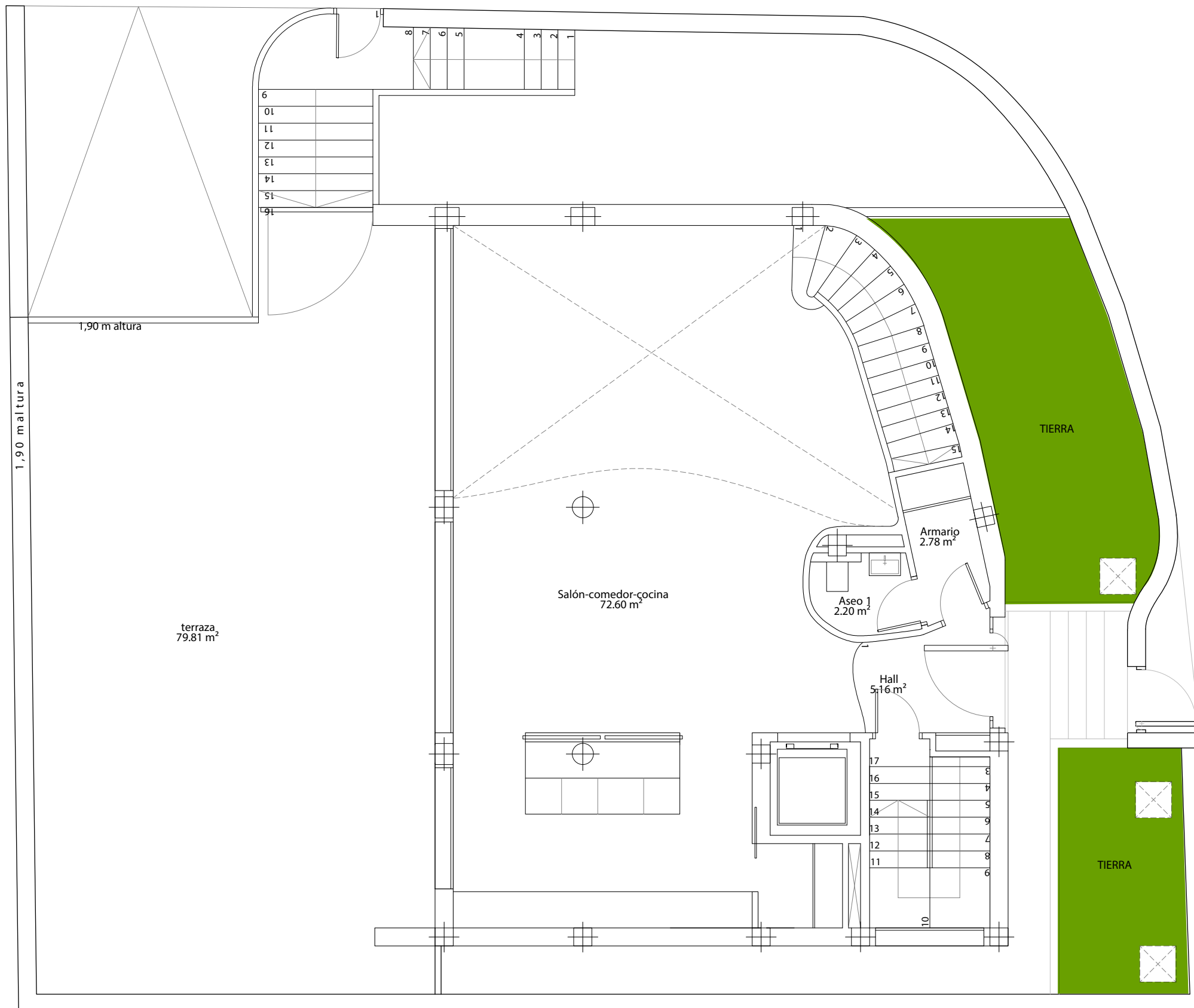
Planta 1
50.34 m²

Aseo 2
1.96 m²

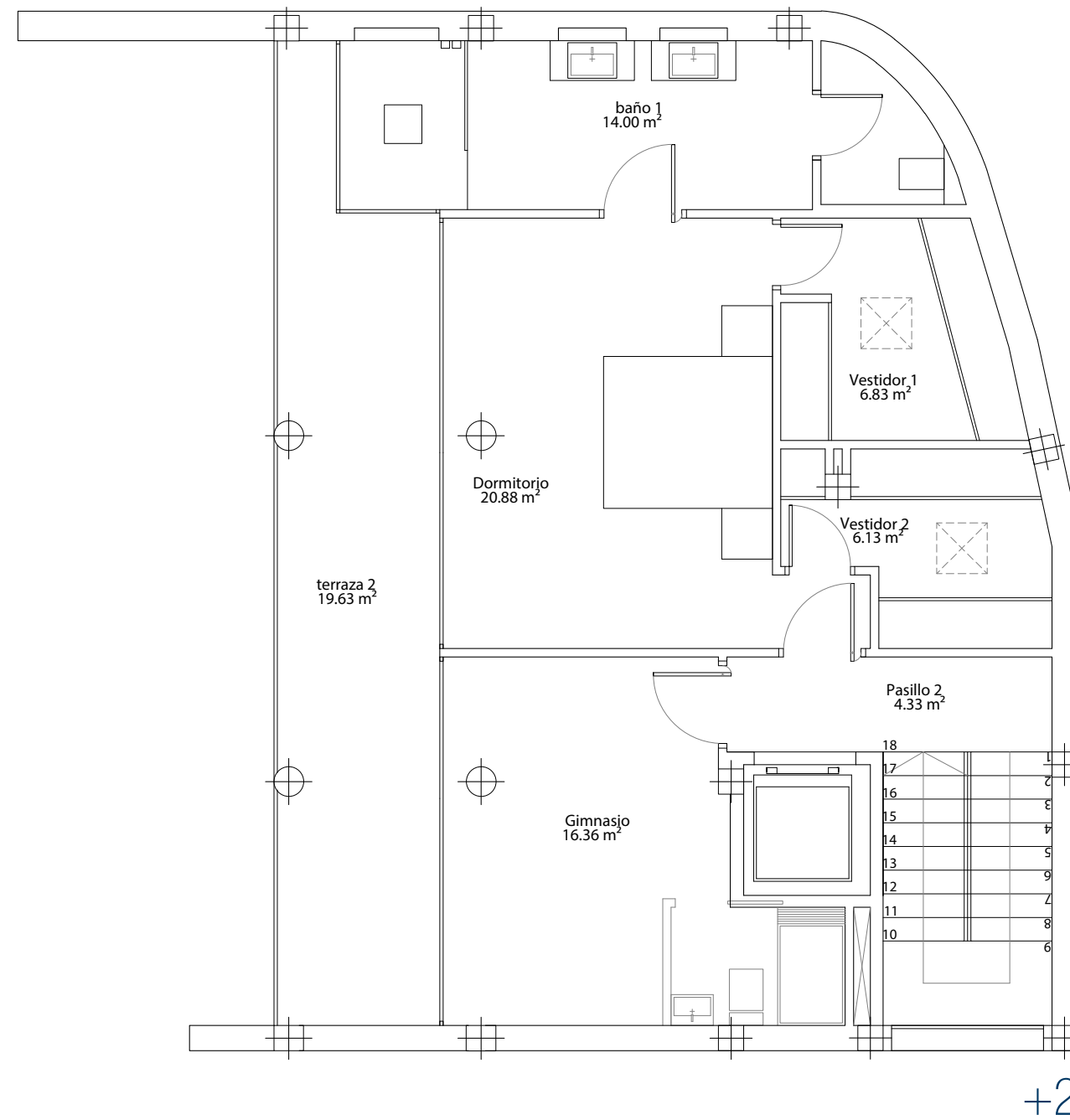
+1

Superficie Construida	
Planta Baja	
Vivienda	109.26 m ²
Planta Primera	
Vivienda	68.77 m ²
Planta Segunda	
Vivienda	101.38 m ²
Planta torreón	
Vivienda	18.23 m ²
Planta Sótano	
Sótano	238.90 m ²
Sup. Const. s/r	297.64 m ²
Sup. Const. total	536.54 m ²

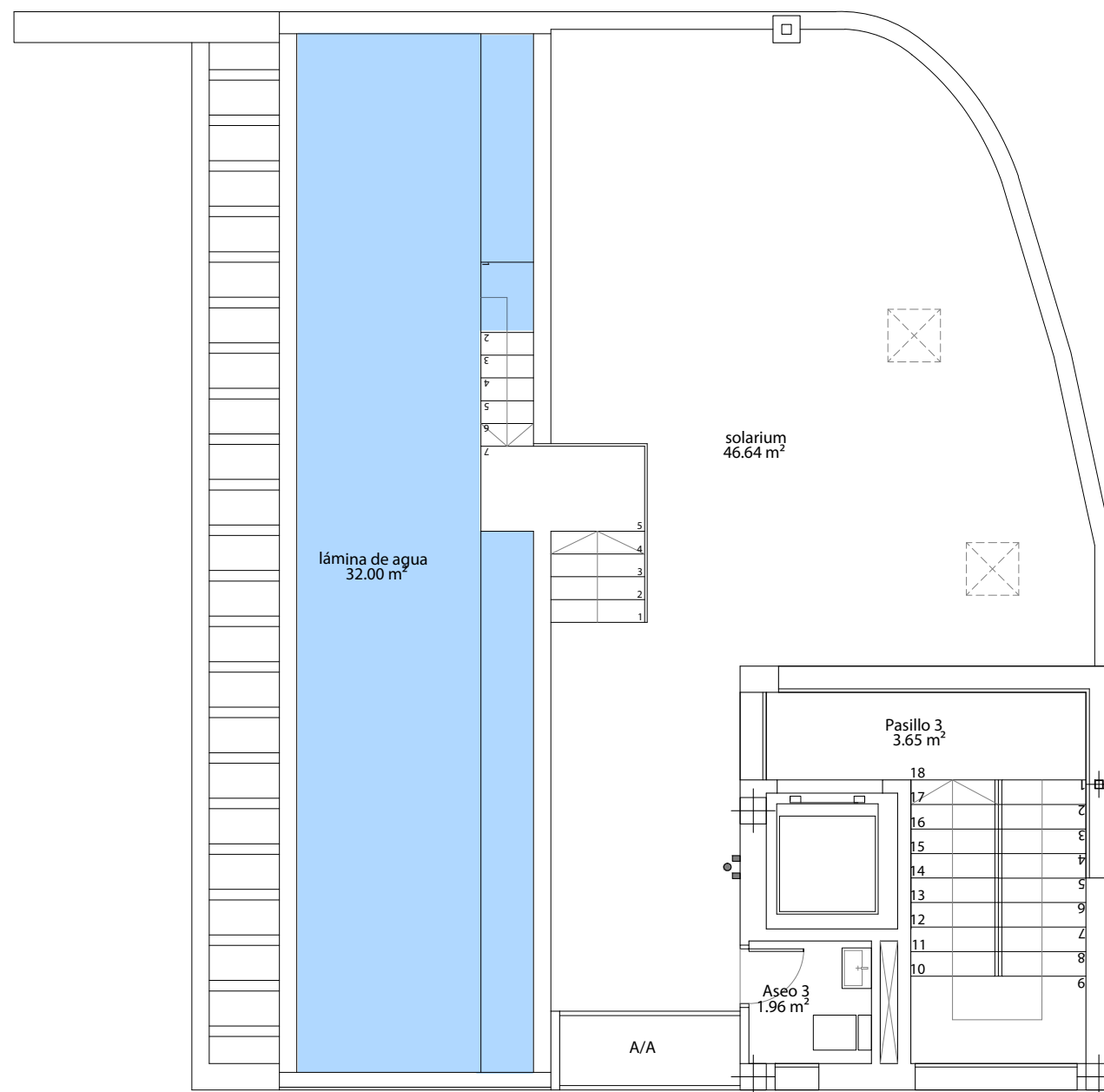




0



+2



Solarium